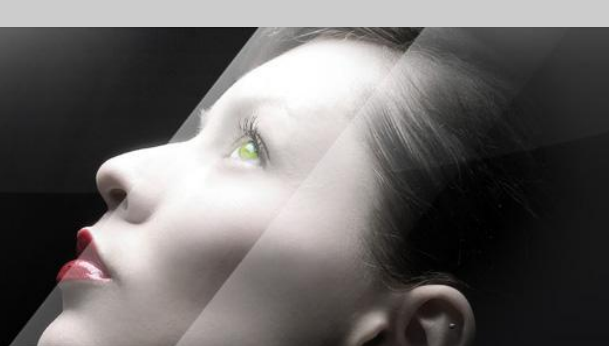


Burcridge

'Hera Lighting UK'

Brilliance in lighting design



NEWSLETTER :: November 2013

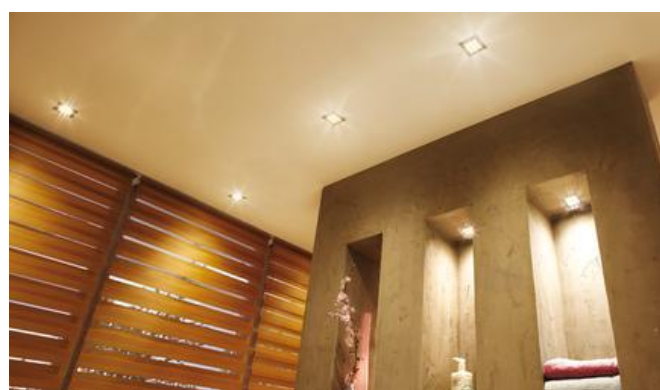
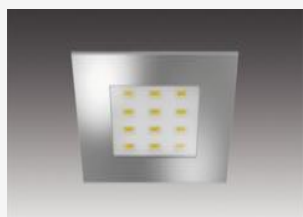
Hera®

Recessed Ceiling & Display Lighting

Flat and powerful recessed LED Lighting for 68mm dia:: The R68 / Q68 LED HO

This extremely long life, high output recessed lighting is combined with an innovative LED technology and offers elegant and energy saving indirect lighting solutions for ceilings, alcoves and cabinets.

Energy Efficiency: **220lm**
Colour Rendering: **very good, Ra/CRI > 90**
Colour appearance: **ww (warm white) appr. 3000K**
nw (neutral white) appr. 4000K



[For full details click HERE](#)

NEW :: Flat and powerful recessed LED Lighting:: The AR 78 / AQ 78 LED

This extremely long life, high output recessed lighting is combined with an innovative LED technology and offers elegant and energy saving indirect lighting solutions for ceilings, alcoves and cabinets.

Energy Efficiency: **350lm**
Colour Rendering: **very good, Ra/CRI > 97**
Colour appearance: **ww (warm white) appr. 3000K**
nw (neutral white) appr. 4000K



[For full details click HERE](#)

Recessed Swivel and Tilt LED Lighting:: The SR 68 LED

This extremely long life, recessed lighting is combined with an innovative LED technology and offers elegant and energy saving indirect lighting solutions for ceilings.

Energy Efficiency: **319/503lm**
Colour Rendering: **good, Ra/CRI > 85**
Colour appearance: **ww (warm white) appr. 3000K**
nw (neutral white) appr. 4000K

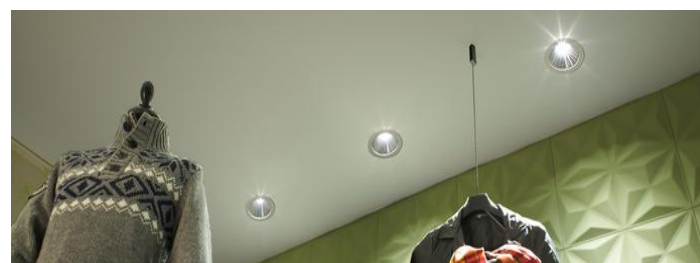


[For full details click HERE](#)

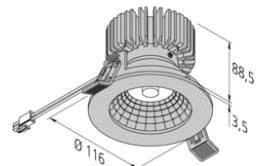
LED Recessed Lighting:: The DR 105 / DR 155 LED

This extremely long life, recessed lighting is combined with an innovative LED technology and offers elegant and energy saving indirect lighting solutions for ceilings.

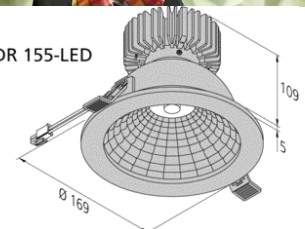
Energy Efficiency: **900/1300lm**
Colour Rendering: **good, Ra/CRI > 85**
Colour appearance: **ww (warm white) appr. 3000K**
nw (neutral white) appr. 4000K



DR 105-LED



DR 155-LED



[For full details click HERE](#)

View Previous Newsletters:

[October 2013:](#)
Power Sticks

[September 2013:](#)
Cove Profile for Lighting

[Hera General Catalogue](#)

For additional information contact our Sales Dept ::

Burcridge Ltd
Eastlands Court Business Ctr
St Peters Road
Rugby CV21 3QP

T: 01788 555 038

Web: www.burcridge.com

To sign up to our Monthly Newsletter [CLICK HERE](#)

